



RM ENTERPRISES

A Company of Quality



ABOUT US

RM Enterprises started its journey in 1988 under the leadership of Mr. Ramawatar More & Mr. Dilip Khakholia as an engineering component manufacturer in Alwar, Rajasthan supplying to **automotive, railway, agricultural, oil & gas industry**. Since then, the organization is expanding with the support of its reputation in the market and the customer satisfaction.

We have **high class quality of manufacturing and inspection facilities** that makes us possible to deliver the product of utmost quality to our customers. We have a good hold in the market and various big reputed companies (both regional and MNC) are our regular customers.

We are capable of meeting the challenging demand of the competitive market place. Moreover we make sure that only the best of our product reach the clients at appropriate cost and within stipulated frame of time.

OUR LOCATIONS



RM ENTERPRISES
A Company of Quality



- **Old Industrial Area, Alwar,
Rajasthan, India – 301001**
+91-9636446364
- **824 77 street SW, Edmonton,
AB, T6X0A3 Canada**
+1 (780) 716-6673





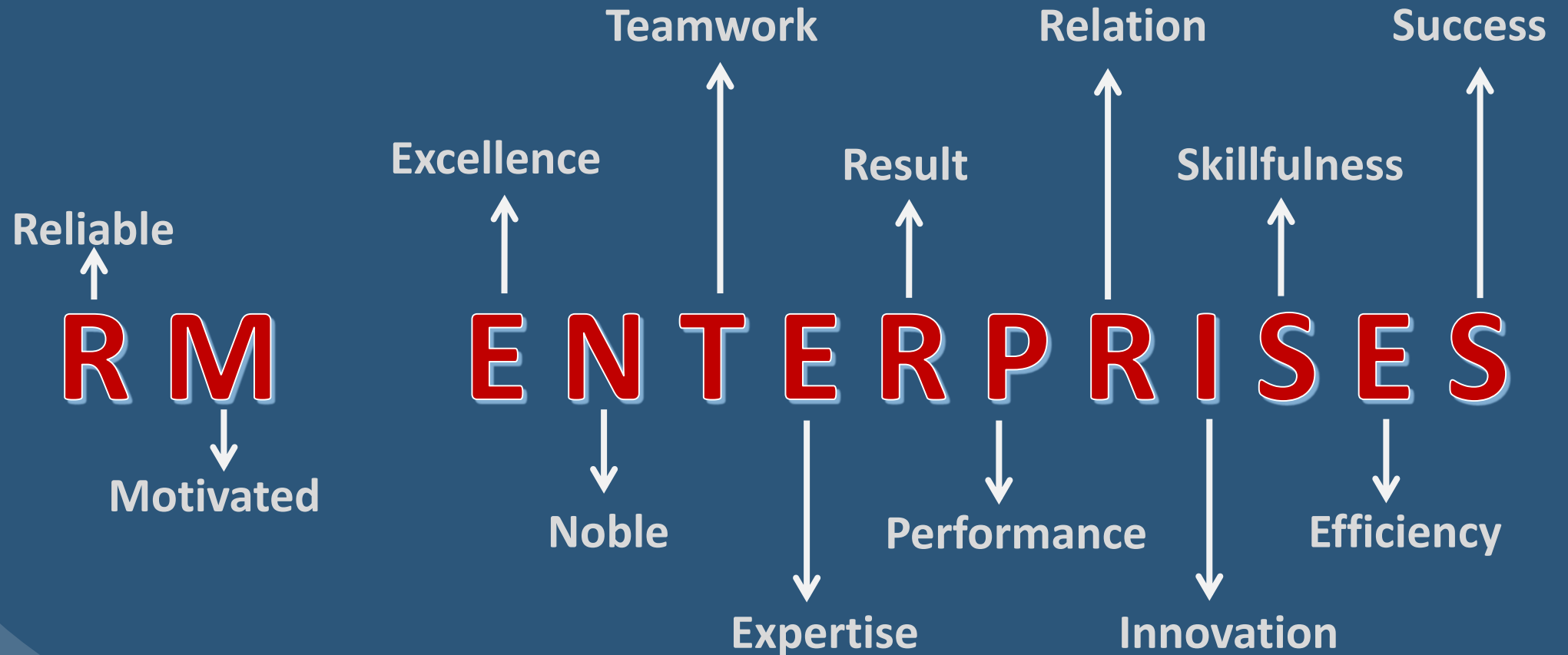
RM ENTERPRISES
A Company of Quality

COMPANY MISSION

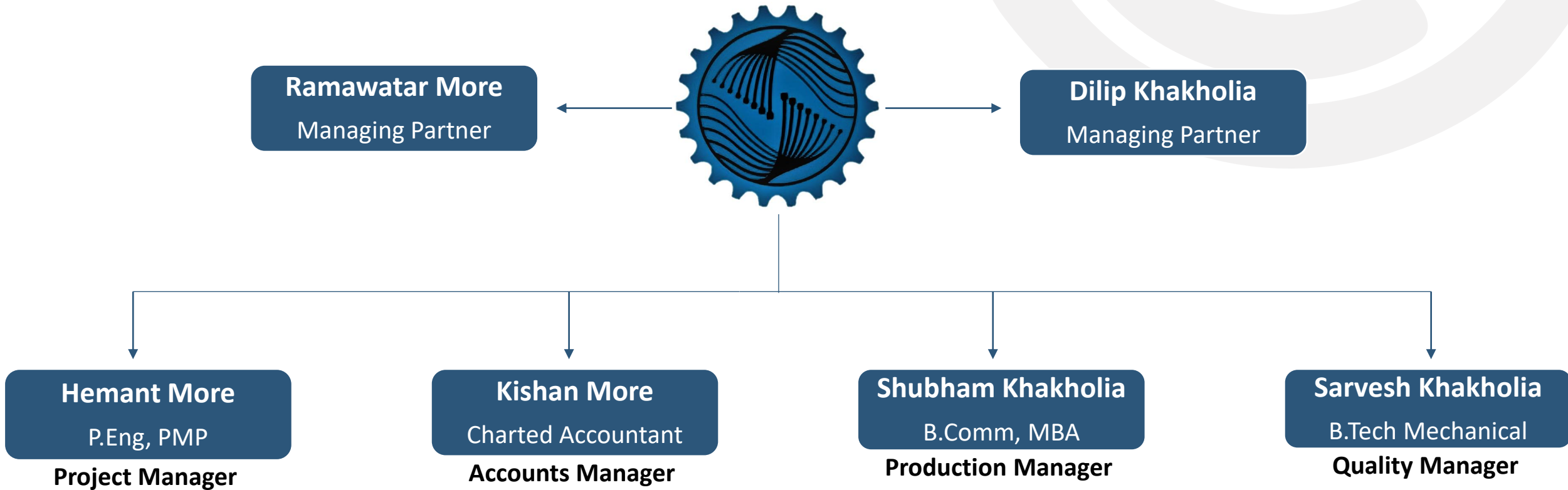
Our mission is to become a global enterprise fulfilling its customers' needs and aspirations for engineering goods, setting benchmarks in technology, styling and quality so that it converts its customers into its brand advocates. The company will provide an engaging environment for its people to perform to their true potential. It will continue its focus on value creation and enduring relationships with its partners.



WHY CHOOSE US?



ORGANISATION CHART





MANUFACTURING FACILITIES



CASTING

- Sand Casting
- Die Casting
- Investment Casting
- Continuous Casting
- Centrifugal Casting



MACHINING

- CNC Machining
- VMC Machining
- HMC Machining
- Gear Hobbing
- 5 Axis Machining



FABRICATION

- Shearing
- Stamping
- Welding
- Forming
- Bending



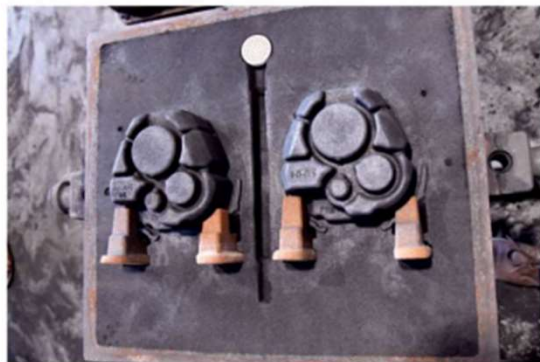
SURFACE FINISHING

- Heat Treatment
- Anodizing
- Phosphating
- Electroplating
- Nitriding



RM ENTERPRISES
A Company of Quality

- **INFRASTRUCTURE – CASTINGS**
SAND / DIE / INVESTMENT / CONTINUOUS / CENTRIFUGAL





RM ENTERPRISES
A Company of Quality

- **INFRASTRUCTURE – CASTINGS**
SAND / DIE / INVESTMENT / CONTINUOUS / CENTRIFUGAL





INFRASTRUCTURE – MACHINING

CNC / VMC / HMC / GEAR HOBBING

- **CNC Machines Capacity**
 - Max OD : 350 mm
 - Max Length : 600 mm

- **VMC Machines Capacity**
 - 820 X 510 X 510 mm

- **HMC Machine Capacity**
 - 1020 X 800 X 100 mm

- **Gear Hobbing Capacity**
 - Max Module : 6
 - Max Dia : 350 mm

- **Gear Shaving Capacity**
 - Max Module : 6
 - Max Dia : 350 mm

- **Other Machines**
 - Drill Machines
 - Lathe Machines





RM ENTERPRISES
A Company of Quality

- **INFRASTRUCTURE – MACHINING**
CNC / VMC / HMC / GEAR HOBGING





RM ENTERPRISES
A Company of Quality

- **INFRASTRUCTURE – FABRICATION**
SHEARING / STAMPING / WELDING / FORMING / BENDING



- **INFRASTRUCTURE – SURFACE FINISHING**
ANODIZING / PHOSPHATING / ELECTROPLATING / NITRIDING



RM ENTERPRISES
A Company of Quality





PRODUCT RANGE

CASTING PRODUCTS

- Ferrous Casting
 - Gray Iron Casting
 - Ductile Iron Casting
- Non Ferrous Casting
 - Aluminum Casting
 - Copper Casting
 - Bronze Casting
 - Brass Casting





PRODUCT RANGE

TRANSMISSION PRODUCTS

- Shafts & Couplings
- Pulley & Flywheels
- Chains & Sprockets
- Gears & Gear Trains
 - Spur Gear
 - Helical Gear
 - Internal Gear
 - Worm Gear
 - Bevel Gear
 - Rack & Pinion





PRODUCT RANGE

STOCK / TUBULAR PRODUCTS

- Bar stock Items
 - Carbon Steel / Alloy Steel
 - Stainless Steel
 - Aluminum
 - Copper & its alloy
- Plate stock Items
 - Mild Steel
 - Stainless Steel
- Tubular Items
 - Mild Steel
 - Stainless Steel
 - Copper & its alloy





PRODUCT RANGE

FASTENERS

- Bolts
 - Hex Bolt
 - Carriage Bolt
 - U-Bolt
 - Allen Bolt
- Nuts
 - Hex Nut
 - Heavy Hex Nut
 - Flange Nut
 - Coupling Nut
- Screws
 - Machine Screw
 - Set/ Grub Screw
- Washers
 - Flat Washer
 - Fender Washer
 - Split Lock Washer
- Threaded Rods
 - Mild/ Stainless Steel
 - Aluminum
 - Copper & its alloy





PRODUCT RANGE

SHEET METAL PRODUCTS

- Stainless Steel
- Mild Steel
- Aluminum





RM ENTERPRISES
A Company of Quality



Quality System Assessment

Certificate of Registration

Awarded to
R M Enterprises
Behind Eicher Engine-TMTL, Near Kali Mori Phatak,
Alwar-301001, Rajasthan, India

Hereby granted the Certificate Number: **AQC/RME/023**

Subsequent to the **Renewal Assessment** conducted on **10-Jun-2019** and the organization has been found to be operating a Quality Management System which

Complies with the requirements of
ISO 9001:2015

For the following scope
**Manufacture and Supply of CNC Turned Components
and All Engineering Goods**

Certified Since: 16-Jun-2017 Latest Issue: 19-Jul-2019 Expiry Date: 18-Jul-2022

On behalf of QSAR
Director – Certification (North America Region)



- This certificate is intellectual property of QSAR and can be maintained thru surveillance and renewal audits.
- Certificate should be returned to QSAR in case of non compliance of certification procedure.



ISO Certification 9001:2015





RM ENTERPRISES
A Company of Quality



Certificate of Registration

RM ENTERPRISES

BEHIND EICHER ENGINE- TMTL, NEAR KALI MORI PHATAK,
ALWAR- 301001, RAJASTHAN, INDIA

has been assessed and Certified by Otabu Certification Pvt. Ltd.
as meeting the requirements of:

ISO 14001:2015

Environmental Management System

For the following scope of activities:

**MANUFACTURE AND SUPPLY OF CNC TURNED
COMPONENTS AND ENGINEERING GOODS**

Issue No : 01
Date of Certification: 05 July 2023
1st Surveillance Due: 04 July 2024

Revision No () : NA
2nd Surveillance Due: 04 July 2025
Certificate Expiry: 04 July 2026
(subject to the company maintaining its system to the required standard)

Certificate No:- 0705E190123

To Verify this Certificate please visit at www.otabucert.com



Dr. Anita Gupta
(Managing Director)

*Validity of the certificate is subject to successful completion of surveillance audit on or before due date (in case surveillance audit is not allowed to be conducted, this certificate shall be suspended/withdrawal). *This Certificate of Registration remains the Property of Otabu Certification Pvt. Ltd. and shall be returned immediately upon request.

Otabu Certification Pvt. Ltd., RZ-9 (Ground Floor), Prem Nagar, Udam Nagar, New Delhi-110059 (India)

Email:- info@otabucert.com website:-www.otabucert.com

ISO Certification 14001:2015





RM ENTERPRISES
A Company of Quality



Certificate of Registration

RM ENTERPRISES

BEHIND EICHER ENGINE- TMTL, NEAR KALI MORI PHATAK,
ALWAR- 301001, RAJASTHAN, INDIA

has been assessed and Certified by Otabu Certification Pvt. Ltd.
as meeting the requirements of:

ISO 45001:2018

Occupational Health & Safety Management System

For the following scope of activities:

**MANUFACTURE AND SUPPLY OF CNC TURNED
COMPONENTS AND ENGINEERING GOODS**

Issue No : 01
Date of Certification: 05 July 2023
1st Surveillance Due: 04 July 2024

Revision No () : NA
2nd Surveillance Due: 04 July 2025
Certificate Expiry: 04 July 2026
(subject to the company maintaining its system to the
required standard)

Certificate No:- 07050190223
To Verify this Certificate please visit at www.otabucert.com



Dr. Anita Gupta
(Managing Director)

*Validity of the certificate is subject to successful completion of surveillance audit on or before due date (in case surveillance audit is not allowed to be conducted, this certificate shall be suspended/withdrawn). This Certificate of Registration remains the Property of Otabu Certification Pvt. Ltd. and shall be returned immediately upon request.

Otabu Certification Pvt. Ltd., R2-9 (Ground Floor), Prem Nagar, Uttam Nagar, New Delhi-110059 (India)

Email:- info@otabucert.com website:-www.otabucert.com

ISO Certification 45001:2018





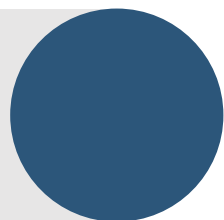
PRACTICES WE FOLLOW

- Six Sigma Manufacturing
- Kaizen – Continuous Improvement
- Poke yoke – Mistake proofing
- 5S Visual workplace
- TPM Equipment reliability
- SMED Quick Changeover
- FMEA
- Point of use storage





DELIVERY & RESPONSIVENESS



- % Schedule adherence : **100%**
- Average response time to request for proposal : **3 days**
- Average response time to customer for enquiries : **24hours**
- Response time to customer complaint : **Immediate**



OUR CLIENTS



RM ENTERPRISES
A Company of Quality

We have various renowned OEM companies as our customers.

Eicher motors, Tafe Motors & Tractors Limited, National Oilwell Varco Completion & Production, Moyno Pumps are some of them.

We always look towards to build a healthy & long-lasting relation with our clients by serving them more than their expectations.





Clients' Appreciation



RM ENTERPRISES
A Company of Quality



THANK YOU!



INFO@RMENTERPRISES88.COM



[HTTP://WWW.RMENTERPRISES88.COM](http://WWW.RMENTERPRISES88.COM)



+91-9680773060